

# REAL DEALS

**ISUZU**  
RELIABILITY IS EVERYTHING

JAN FEB MAR 2022

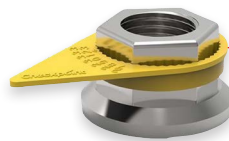
## Isuzu Long Life Antifreeze Premix Si-Oat Coolant



**FROM \$29.20**

5L	<b>\$29.20</b>	205L	<b>\$942.00</b>
20L	<b>\$113.00</b>	1000L	<b>\$4,484.00</b>

## Checkpoint Wheel Indicators



32mm Checkpoint Multi Tooth Yellow

33mm Checkpoint Yellow

41mm Checkpoint Yellow

## Overhead Console Net Kit

Suits N-Series 2013-2020



**ONLY \$51.75**

## Thermostats

Keep your Isuzu engine operating at the ideal temperature with Genuine Isuzu thermostats.



(82°C) 4HK1 engines 2008 - onwards	<b>\$31.15</b>
(85°C) 4HK1 engines 2008 - onwards	<b>\$37.30</b>
4HG1 engines 1999-2003	<b>\$37.80</b>
6HH1/6HE1 engines 1996-2000	<b>\$48.25</b>
6HK1 engines 2008 - onwards	<b>\$50.50</b>

## BVP Water Pumps



NPR/NPS/NQR 00-03	<b>\$105</b>
NKR 03-06	<b>\$108</b>
NPR/NPS/NQR 05-06	<b>\$113</b>

## Broad range of Genuine Isuzu Filter Kits

These kits includes oil filter(s), fuel filter(s), sump plug washer and sedimenter filter(s) and PCV filters where applicable. These kits ensure convenient, efficient servicing.



FR*/FS* 4 cylinder 10/07 - 12/15	<b>\$91.40</b>
FR*/FS*/FT*/FV* 6 cylinder 10/07 - 12/15	<b>\$110.00</b>
NL*/NNR 10/07- onwards	<b>\$144.00</b>
NP*/NQR 10/07- onwards	<b>\$173.00</b>
FR*/FS*/FT*/FV* 6 cylinder 01/16- onwards	<b>\$200.00</b>
FR*/FS* 4 cylinder 01/16 - onwards	<b>\$220.00</b>
FX* 6UZ1 09/10 - 06/11	<b>\$223.00</b>

GIGA 6WG1-TCN 08/11- onwards	<b>\$238.00</b>
FX* 6UZ1 10/07 - 08/10	<b>\$313.00</b>
GIGA 6WG1-TCC/6WG1-TCS 03/13- onwards	<b>\$315.00</b>
FX* 6UZ1 07/11 - 02/16, FY* 6UZ1 12/12 - 02/16	<b>\$317.00</b>
GIGA 6WG1-TCC/6WG1-TCS 10/09 - 06/11	<b>\$318.00</b>
GIGA 6WG1-TCC/6WG1-TCS 07/11 - 02/13	<b>\$320.00</b>
GIGA 6WG1-TCC/6WG1-TCS 10/07 - 09/09	<b>\$340.00</b>

**Genuine Parts**

## Air Conditioner Parts

Maintain optimum performance of your air conditioning system with Genuine Isuzu parts.



### A/C Condensers

NLR/NLS 10/07 - 08/10	<b>\$445</b>
NN*/NP*/NQ* 10/07 - onwards	<b>\$474</b>
NLR/NLS 09/10 - onwards	<b>\$483</b>
FR*/FS*/FT*/FV* 10/07 - onwards, FX* 10/07 - 04/12	<b>\$819</b>
FX* 05/12 - onwards, FY* 12/12 - onwards	<b>\$830</b>
CX*/CY*/EX* 10/07 - onwards	<b>\$871</b>

### A/C Compressors

NL*/NN* 4J1 07/10 - 05/15	<b>\$1,309</b>
NP*/NQ* 07/10 - 05/15	<b>\$1,309</b>
CX*/CY*/EX* 10/07 - onwards	<b>\$1,347</b>
FRR/FSR/FSD/FTR/FTS/FV* 6HK1 10/07- onwards, FX*/FY* 10/07- onwards	<b>\$1,579</b>



## Radiators

Excellent coolant flow allowing for better heat dispersion and more consistent temperatures, ensuring the cooling system performs as intended.

NPR/NQR with 4HK1 engine and manual transmission, 10/07 - 08/10	<b>\$1,359</b>
NPS 10/07 - 08/10	<b>\$1,403</b>
NNR/NPR/NQR, 09/10 - onwards with manual transmission	<b>\$1,519</b>
NNR/NPR/NQR with 4HK1 engine and AMT, 10/07 - 08/10	<b>\$1,527</b>
FRR/FSR/FSS/FTR/FTS, 04/96 - 04/00	<b>\$1,987</b>



Genuine Parts

### Shift Brake Cleaner Aerosol

400gm

**ONLY \$6.90**



### Shift Truck Wash

Shift Truck Wash effectively removes road grime and dirt from a range of surfaces.

20L **79.30**

200L **713.00**

### Shift Brake Cleaner

Shift Brake Cleaner is a versatile solvent cleaner that effectively cleans oil, dirt, grease and dust from brake components.

20L **\$115.00**



### Shift Tyre Shine

Shift Tyre Shine is formulated with silicone which rejuvenates tyres and provides a shiny finish.

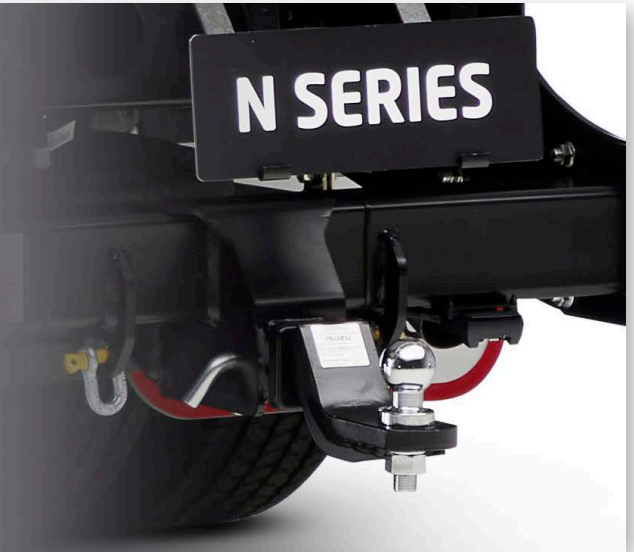
20L **\$146.00**



Lubricants

## New Genuine Isuzu N-Series 3.5T Towbars

Isuzu's newest towbar designs are put through a rigorous dynamic, static and chain-pull testing regime, all components are fully validated to Australian Design Rules (ADR) standards, providing extra peace of mind.



3.5T - NPR/NQR (TIPPER/CREW TIPPER)	<b>\$982</b>	3.5T - NPR/NQR (MWB) Cab Chassis	<b>\$1,008</b>
3.5T - NPS All Variants	<b>\$994</b>	3.5T - NPR/NQR (SWB/LWB/CREW) Cab Chassis	<b>\$1,016</b>
3.5T - NLR/NMR/NLS Variants	<b>\$1,005</b>	3.5T - NNR All Variants	<b>\$1,020</b>



## New Trailer Brake Kit N-Series

To support this Genuine towbar offering, Isuzu offer a Genuine "plug and play" TOW-PRO Elite electric trailer brake kit suitable for the entire N-Series Light Duty Truck range. Suitable for most electric trailer brake applications and compatible with the truck's 24V electrical system.



## Clutch Boosters

Great quality at competitive pricing

FRR,FS*FT*,FV*	<b>\$358</b>
CX/EX	<b>\$409</b>
EXZ,CHR,CVR,CX*,FRR	<b>\$420</b>
F-Series	<b>\$429</b>
FT/FV/FX	<b>\$429</b>
EXZ,CHR,CVR,CX*FT*,FV*	<b>\$436</b>
EX*,CVR,CX*,CY*	<b>\$444</b>



## Isuzu Clutch Kits

Isuzu's clutch plate structure features 17 components compared to nine in a popular competitor brand. The cushion plate allows for greater absorption of shock when the transmission and engine are engaging in comparison to many aftermarket product offerings.

NKR with 4JG2 engine	<b>\$227</b>
NLR/NLS/NNR 10/07 - onwards	<b>\$429</b>
NPR 4HK1 with MYY transmission 02/05 - onwards, NPS with 4HK1	<b>\$464</b>
FRR/FRD with 4HK1 AND MZX/MZW transmission up to 12/15	<b>\$815</b>
FRR 6HK1-TCN with MZX/MZW transmission up to 09/10, FRR 6HK1-TCC with MZX/MZW transmission, FSR/FSD 6HK1-TCN with MZW transmission up to 06/13, FSR/FSD 6HK1-TCC with MZW transmission 10/17 onwards, FSD 6HK1-TCN with MZX transmission	<b>\$910</b>
FVD/FVL/FVM/FVR/FVY/FVZ/GVD/GVR 6HK1-TCS with ZF 9S1110 transmission (ceramic clutch) 10/07 - onwards	<b>\$927</b>



**FROM \$227**

**BVP**

## The Ultra Quiet Genset

<b>Ultra Quiet Genset 20KVA GS020PTY \$22,548.41</b>	<b>Ultra Quiet Genset 37KVA GS037PTY \$31,315.14</b>	<b>Ultra Quiet Genset 50KVA GS050PTY \$38,866.31</b>
--	--	--

**Power Solutions**

## Meritor® Red Brake Drum

Lightweight construction with 20% weight reduction compared to cast drums for increased payload capacity and improved fuel consumption.

Single piece steel shell, machine balanced with no weld seams and balance weights delivers superior concentricity and better road handling.



**FROM \$174**

## Meritor® Red Brake Chambers

Tested to meet SAE standards ensuring optimal reliability across truck & trailer applications. Includes release tool, mounting hardware & clevis for ease of installation.

MBD190L - 16.5"x7" 10-Stud x 285mm PCD	<b>\$174</b>
MBD282L - 16.5"x8.62" 10-Stud x 285mm PCD	<b>\$233</b>
MBD136L - 16.5"x5" 10-Stud x 285mm PCD	<b>\$252</b>

MBC2430 - Brake Chamber 24/30 2.5" Stroke	<b>\$56.80</b>
MBC3030 - Brake Chamber 30/30 2.5" Stroke	<b>\$56.80</b>

## Fleetguard® Service Filters to suit Cummins ISXe5 X15



AS2474 - Air/Oil Separator	<b>\$14.60</b>
FS19764 - Fuel/Water Separator	<b>\$37.00</b>
LF14000NN - Lube Filter NanoNet®	<b>\$60.00</b>
FF5825NN - Fuel Filter NanoNet®	<b>\$85.90</b>

## Timken® Wheel Bearing Sets

SET406 - FF Steer Outer (3782/3720)	<b>\$37.45</b>
SET413 - N Trailer Outer & FF Steer Inner (HM212049/HM212011)	<b>\$54.25</b>
SET401 - R Drive Outer (580/572)	<b>\$66.90</b>
SET409 - FF HD Steer Outer (45280/45220)	<b>\$67.70</b>
SET403 - R Drive Inner (594A/592A)	<b>\$79.60</b>
SET414 - N Trailer Inner (HM218248/HM218210)	<b>\$82.05</b>
SET424 - FL Steer Outer (555S/552A)	<b>\$91.85</b>
SET415 - P Trailer Inner & Outer (HM518445/HM518410)	<b>\$93.90</b>
SET423 - FL Steer Inner (6461A/6420)	<b>\$180.00</b>

## SKF® Scotseal PlusXL Wheel Seal

Easy to install. Fitted by hand, no special installation tools required. Suitable for high temperature applications and compatible with synthetic lubricants. One piece design that maintains a rubber-to-metal contact on the inner & outer diameter of the seal with the hub bore & axle spindle.

46300 - N Trailer Axle	<b>\$32.70</b>
35058 - FF Steer Axle	<b>\$38.40</b>
42627 - P Trailer Axle	<b>\$39.15</b>
47691 - R Drive Axle	<b>\$44.55</b>
43761 - FL Steer Axle	<b>\$63.45</b>

## SKF® Scotseal Classic Wheel Seal

A unitized, one piece design that maintains a metal-to-metal contact on the inner & outer diameter of the seal with the hub bore & axle spindle. Requires Scotseal installation tools.

35066 - FF Steer Axle	<b>\$27.60</b>
47697 - R Drive Axle	<b>\$31.70</b>
46305 - N Trailer Axle	<b>\$32.85</b>
42623 - P Trailer Axle	<b>\$35.55</b>
43764 - FL Steer Axle	<b>\$50.15</b>

## Stemco® Trailer Grease Hub Seals



STM-0747G - Trailer with BPW Axles

**\$7.70**

STM-0723G - Trailer with Parallel Bearing

**\$16.90**

STM-0743G - Trailer with Tapered Bearing

**\$16.90**

## Stemco® Kaiser QWIK KIT™ Steer Axle King Pin Kits



No ream installation, the spiral steel bushing can be hand twisted into the knuckle. Grooved pin allows more grease to lubricate the bearing. Longer life when compared with conventional bronze and nylon bushes.

K180R - Meritor MFS73, MFS16, MFS18

**\$588**

K141S - Dana I132SG, I140SG, I140S, I140W (140KK100)

**\$637**

KG931R - Meritor FG941, FG931, MFS13, MFS14

**\$721**

## Watts Wheels® Chrome Hubcaps & Nut Covers



**FROM \$7.65**

8" Chrome Hubcap

**\$7.65**

33mm Chrome Nut Covers - Blister Pack of 10

**\$12.30**

8" Stainless Steel Hubcap

**\$16.05**

33mm Stainless Steel Nut Covers - Blister Pack of 10

**\$22.60**

## Watts Wheels® Metal Cab Fans



**ONLY \$50.30**

Metal Cab Fan - 12 Volt

Metal Cab Fan - 24 Volt

### ISUZU SERVICE AGREEMENTS

## Zero-stress servicing. Brought to you by Isuzu.

No business wants big, unexpected bills. But with an Isuzu service agreement, you can flatten your truck servicing costs into a predictable monthly payment (or upfront fee with Isuzu Essentials). You'll also be part of one of Australia's biggest dealer networks, so you can book a service at locations around the country. With the new Chain of Responsibility laws, proper servicing will protect your business. Lastly, service agreements come with Isuzu Care, Australia's most comprehensive truck customer care programme. To find out more, see your nearest dealer or visit [isuzu.com.au/care-support/service-agreements](http://isuzu.com.au/care-support/service-agreements).

Ask your local Isuzu dealer about which service agreement is right for you.

Isuzu Essentials

Isuzu Essentials Plus

Isuzu Total

Isuzu Heritage



## ISUZU MERCHANDISE



Black Ottoman Cap  
**\$12.00ea**



Red Thermo  
Drink Bottle  
**\$12.00ea**



Heavy Brushed Cap  
**\$15.00ea**



Jive Bluetooth  
Speaker  
**\$23.00ea**



Standard Cooler Bag  
**\$34.00ea**



Aston Polos  
**\$38.00ea**



Deluxe Cooler Bag  
**\$42.00ea**



Backpack  
**\$55.00ea**



Premium Backpack  
**\$100.00ea**

## Our Transport Industry Partners



VISIT [PARTS.ISUZU.COM.AU/FIND-A-DEALER](https://parts.isuzu.com.au/find-a-dealer) FOR YOUR CLOSEST DEALERSHIP

Prices published are recommended selling prices, include GST and are effective 1st January 2022 until 31st March 2022 or while stocks last. Images are for illustrative purposes only. All parts advertised herein have been included in good faith and on the basis that those parts will be available at participating Isuzu Dealerships at the time of publication. Isuzu and participating Dealers reserve the right to correct any errors made in parts listed and/or the pricing published.