

REAL DEALS

ISUZU
RELIABILITY IS EVERYTHING

APR MAY JUN 2022

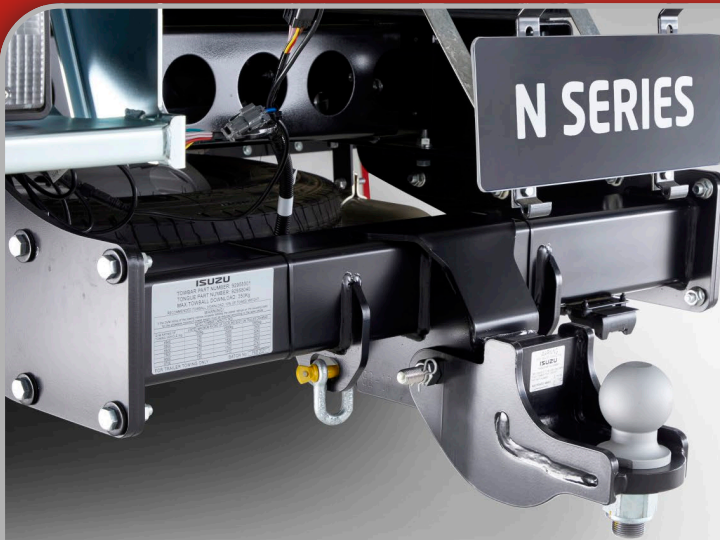


Image for illustration purposes only.

New Genuine Isuzu N-Series 3.5T Towbars

Isuzu's newest towbar designs are put through a rigorous dynamic, static and chain-pull testing regime. All components are fully validated to Australian Design Rules standards, providing extra peace of mind.

| | |
|------------------------------------|----------------|
| NPR/NQR (TIPPER/CREW TIPPER) | \$982 |
| NPS ALL VARIANTS | \$994 |
| NLR/NMR/NLS VARIANTS | \$1,005 |
| NPR/NQR (MWB) CAB CHASSIS | \$1,008 |
| NPR/NQR (SWB/LWB/CREW) CAB CHASSIS | \$1,016 |
| NNR ALL VARIANTS | \$1,020 |

New N-Series Trailer Brake Kit

Genuine "plug and play" TOW-PRO Elite electric trailer brake kit suitable for most electric trailer brake applications and compatible with the Isuzu Truck's 24V electrical system.

\$720



BVP Shock Absorbers

High quality at a great price!



| | |
|--------------------------------|----------------|
| NPR, NQR 1994-2006 | \$41.20 |
| NKR 1999-2006 | \$41.60 |
| NL*, NP* 200/300, 1998-ONWARDS | \$43.90 |
| NPR, NQR 400/450, 2008-ONWARDS | \$45.20 |
| NPR 2009-ONWARDS | \$47.10 |

Isuzu Batteries

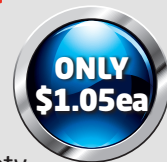
Don't get caught out this Winter.
Get your battery tested now!



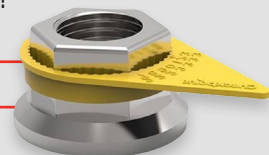
| | | | |
|---------|--------------|--------|--------------|
| NS70LMF | \$186 | N100MF | \$274 |
| N100LMF | \$274 | N150MF | \$352 |

Checkpoint Wheel Indicators

Dependable, simple and cost effective wheel safety.
Fast and easy to install!



| |
|------------------------|
| CP32Y - 32MM WHEEL NUT |
| CP33Y - 33MM WHEEL NUT |
| CP41Y - 41MM WHEEL NUT |



Broad range of Genuine Isuzu Filter Kits

These kits includes oil filter(s), fuel filter(s), sump plug washer and sedimenter filter(s) and PCV filters where applicable. These kits ensure convenient, efficient servicing.



| | | | |
|--|--------------|--|--------------|
| FR*/FS*/FT*/FV* 6 CYLINDER 10/07 - 12/15 | \$110 | FX* 6UZ1 10/07 - 08/10 | \$313 |
| NL*/NNR 10/07 - ONWARDS | \$144 | GIGA 6WG1-TCC/6WG1-TCS 03/13 - ONWARDS | \$315 |
| FR*/FS*/FT*/FV* 6 CYLINDER 01/16 - ONWARDS | \$200 | FX* 6UZ1 07/11 - 02/16, FY* 6UZ1 12/12 - 02/16 | \$317 |
| FR*/FS* 4 CYLINDER 01/16 - ONWARDS | \$220 | GIGA 6WG1-TCC/6WG1-TCS 10/09 - 06/11 | \$318 |
| FX* 6UZ1 09/10 - 06/11 | \$223 | GIGA 6WG1-TCC/6WG1-TCS 07/11 - 02/13 | \$320 |
| GIGA 6WG1-TCN 08/11 - ONWARDS | \$238 | FX*/FY* 6UZ1 03/16 - ONWARDS | \$338 |
| | | GIGA 6WG1-TCC/6WG1-TCS 10/07 - 09/09 | \$340 |

Isuzu Wiper Motors

| | |
|--|--------------|
| NL*/NN*/NP*/NQ* 10/07 - ONWARDS | \$355 |
| FR*/FS* 10/07 - ONWARDS | \$376 |
| FT*/FV*/FX* 10/07 - ONWARDS, FY* 12/12 - ONWARDS | \$385 |



Bulk Brake Pads

Contains 4 sets of brake pads for popular applications.



| | |
|---|----------------|
| NNR, NPR, NKR 2013 ONWARDS - FRONT, NPR 2013 ONWARDS - REAR | \$932 |
| NPR 2013 ONWARDS - FRONT | \$1,004 |
| NLR 2013 ONWARDS - FRONT & REAR, NNR 2013 ONWARDS - REAR | \$1,128 |
| NQR 2010 ONWARDS - FRONT | \$1,323 |

Turbochargers

Maximise performance with a Genuine Isuzu turbocharger.

| | |
|---|----------------|
| NLR/NLS/NNR 4J11 EURO 4 10/07 - 08/10 | \$2,318 |
| NPR/NPS/NQR 4HK1 10/07 - 05/16, FSS 10/07 - 05/16, FRR 4HK1 10/07 - 05/16 | \$2,467 |
| FRR/FSR/FT*/FV*/GV* 6HK1 10/07 - 10/15 | \$3,584 |
| FX*/GX* EURO 5 09/10 - CURRENT, FY* 12/12 - CURRENT | \$4,351 |
| FX*/GX* 6UZ1 EURO 4 01/08 - 08/10 | \$5,087 |



BVP Starter Motors



- NK*/NPR/NQ* WITH 4B* ENGINES, 85-98 **\$447**
- FS*/FT*/FV* WITH 6BD1T/6BG1 ENGINES, 86-95 **\$605**
- NK*/NPR/NQ* WITH 4HF1 ENGINES, 91-98 **\$637**
- FV*/GV* WITH 6SD1T ENGINES, UP TO 01/2008 **\$660**

BVP Alternators

Constructed from high quality components to ensure correct fitment and reliability.

- NK*/NP*/NQ* WITH 4HF1/4HG1 ENGINES, 94-96 **\$589**
- NK*/NPS WITH 4HF1, 94-95 **\$590**
- FS*/FT*/FV* WITH 6BG1T/6BG1 ENGINES, 86-95 **\$932**

BVP Wheel Bearings

- OUTER REAR AXLE - NK*/NL*/NN*/NP* 1994-2008 **\$26.55**
- INNER REAR AXLE - NK*/NL*/NN*/NP* 1994-2008 **\$25.45**
- OUTER REAR AXLE - NN*/NP*/NQ* 1994-2008 **\$30.05**
- INNER REAR AXLE - NN*/NP*/NQ* 1994-2008 **\$35.65**
- OUTER FRONT AXLE - NK*/NP*/NQ* 1994-2008 **\$20.20**



- INNER FRONT AXLE - NK*/NP*/NQ* 1994-2008 **\$27.60**
- OUTER REAR AXLE - CX*/EX*/FT*/FV* 1996-2008 WITH ISUZU AXLE **\$102.00**
- INNER REAR AXLE - CX*/EX*/FT*/FV* 1996-2008 WITH ISUZU AXLE **\$116.00**

Eaton® Advantage Clutch Kits

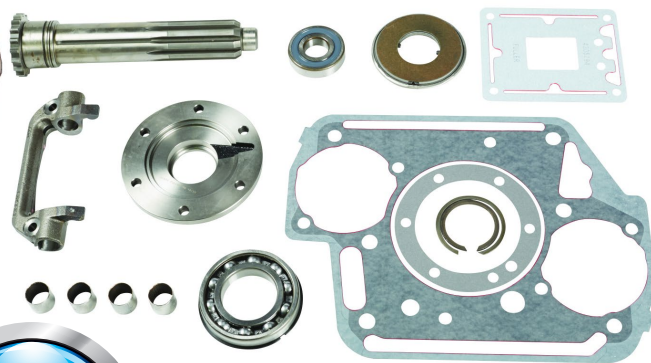
Offering more protection, less maintenance, and maximum uptime and performance. The Easy-Pedal™ design reduces pedal effort by as much as 50%, increasing driver satisfaction and ease of operation.



- 308935-529 -2" 10-SPLINE 2050 LB.FT.
- 308935-515 -2" 10-SPLINE 2050 LB.FT. PRE-DAMPER
- 308938-556 -2" 14-SPLINE 2250 LB.FT.
- 308938-583 -2" 14-SPLINE 2250 LB.FT. PRE-DAMPER

Eaton® Clutch Installation Kits

Save time and give yourself peace of mind by using an Eaton Clutch Installation Kit; containing all the parts and instructions you need for longer clutch life, smoother shifts and less wear on your transmission.



- K-2468 - RT SERIES 10-SPLINE SHAFT
- K-3768 - RT SERIES 14-SPLINE SHAFT
- K-4125 - RT SERIES HYDRAULIC CLUTCH RELEASE



BVP

Allmakes

Meritor® Red Brake Drum

Lightweight construction with 20% weight reduction compared to cast drums for increased payload capacity and improved fuel consumption. Single piece steel shell, machine balanced with no weld seams and balance weights delivers superior concentricity and better road handling.

| | |
|---|--------------|
| MBD190L - 16.5"x7" 10-STUD x 285MM PCD | \$174 |
| MBD282L - 16.5"x8.62" 10-STUD x 285MM PCD (HENDRICKSON) | \$233 |
| MBD136L - 16.5"x5" 10-STUD x 285MM PCD | \$252 |



Meritor® Red Brake Chambers

Tested to meet SAE standards ensuring optimal reliability across truck & trailer applications. Includes release tool, mounting hardware & clevis for ease of installation.

| | |
|------------------------------|----------------|
| MBC2430 24/30 2.5" STROKE | \$56.80 |
| MBC3030 30/30 2.5" STROKE | \$56.80 |

Hendrickson Primaax® Suspension

98583-068 - SHOCK ABSORBER
PAX 230/460 GEN II & 232/462/692 EX
60271-002 - AIR SPRING ASSEMBLY
PAX 230/460 GEN II
98734-094 - AIR SPRING ASSEMBLY
PAX 232/462/692 EX



Talk to us today for a great price!

Hendrickson HAS® Suspension

60670-005-L - STANDARD SHOCK ABSORBER - HAS 230/231/460/461
60675-003-L - HI-TORQUE SHOCK ABSORBER - HAS 230/231/460/461
57122-002 - AIR SPRING ASSEMBLY HAS 230/231/460/461

Watts Wheels® Chrome Hubcaps & Nut Covers

| | |
|--|----------------|
| 7103 - 8" CHROME HUBCAP | \$7.65 |
| 8074BP - 33MM CHROME NUT COVERS BLISTER PACK OF 10 | \$12.30 |
| 7103SS - 8" STAINLESS STEEL HUBCAP | \$16.05 |
| 8074SSBP - 33MM STAINLESS STEEL NUT COVERS BLISTER PACK OF 10 | \$22.60 |

SKF® Scotseal PlusXL Wheel Seal

Easy to install! Fitted by hand, no special installation tools required. Suitable for high temperature applications and compatible with synthetic lubricants. One piece design that maintains a rubber-to-metal contact on the inner and outer diameter of the seal with the hub bore and axle spindle.

| | |
|------------------------|----------------|
| 46300 - N TRAILER AXLE | \$32.70 |
| 35058 - FF STEER AXLE | \$38.40 |
| 42627 - P TRAILER AXLE | \$39.15 |
| 47691 - R DRIVE AXLE | \$44.55 |
| 43761 - FL STEER AXLE | \$63.45 |

Stemco® Kaiser QWIK KIT™ King Pin Kits

No ream installation, the spiral steel bushing can be hand twisted into the knuckle. Grooved pin allows more grease to lubricate the bearing. Longer life when compared with conventional bronze and nylon bushes.



| | |
|--|--------------|
| K180R - MERITOR MFS73, MFS16, MFS18 | \$588 |
| K141S - DANA I132SG, I140SG, I140S, I140W (I40KK100) | \$637 |
| KG931R - MERITOR FG941, FG931, MFS13, MFS14 | \$721 |

SKF® Hub Caps

| | |
|---|----------------|
| 1644 - OIL HUBCAP TRAILER AXLE TN 5.5" (STEMCO 4009) | \$31.30 |
| 1613 - OIL HUBCAP STEER AXLE 5.5" (STEMCO 4249) | \$31.55 |
| 1612 - OIL HUBCAP STEER AXLE 4.5" (STEMCO 4024) | \$37.15 |





Isuzu Seat Covers

Protect your investment with Isuzu seat covers.



Rubber Floor Mats

Protect the truck cabin from damage with high grade rubber that is easy to maintain and clean.

| | |
|---|-----------------|
| FT*/FV* 2008 ONWARDS | \$61.80 |
| FR*/FS* 2008 ONWARDS | \$64.40 |
| FX* 2008 ONWARDS, FY* 2013 ONWARDS | \$66.55 |
| NLR/NLS 2008 ONWARDS | \$74.10 |
| NNR/NPR/NQR 2008 ONWARDS | \$74.10 |
| CX*/CY*/EX* 2003 ONWARDS | \$89.10 |
| NNR/NPR/NQR/NPS 2008 ONWARDS (REAR SET) | \$150.00 |

Sheepskin Seat Cover

| | |
|--|--------------|
| F-SERIES FH 2008 ONWARDS, FX-GIGA - DRIVER'S SEAT ONLY - TO SUIT ISRI 6860 SUSPENSION SEAT | \$273 |
|--|--------------|

Super Tough HD Canvas Seat Covers

| | |
|--|--------------|
| F-SERIES FH 2008 ONWARDS, FX-GIGA - DRIVER'S SEAT ONLY - TO SUIT ISRI 6860 SUSPENSION SEAT | \$178 |
|--|--------------|

| | |
|---|--------------|
| F-SERIES FH 2008 ONWARDS - INCLUDES DRIVER, CENTRE AND PASSENGER COVERS. WILL NOT SUIT PASSENGER SUSPENSION SEAT. | \$244 |
|---|--------------|

| | |
|---------------------------------------|--------------|
| NL* 2008 ONWARDS - DRIVER & PASSENGER | \$244 |
|---------------------------------------|--------------|

| | |
|--------------------------------------|--------------|
| NN*/NP*/NQ* 2008 ONWARDS - REAR SEAT | \$244 |
|--------------------------------------|--------------|

| | |
|---|--------------|
| NN*/NP*/NQ* 2008-2014 - DRIVER & PASSENGER - EXCLUDING SUSPENSION DRIVER'S SEAT | \$244 |
|---|--------------|

| | |
|---|--------------|
| NN*/NP*/NQ* 2015 ONWARDS - DRIVER & PASSENGER - WITH SUSPENSION DRIVER'S SEAT | \$244 |
|---|--------------|

| | |
|--|--------------|
| F-SERIES FH 2008 ONWARDS - INCLUDES DRIVER, CENTRE AND PASSENGER COVERS. SUITS PASSENGER ISRI SUSPENSION SEAT. | \$281 |
|--|--------------|

| | |
|---|--------------|
| FS*/FR* CREW CAB 2008 ONWARDS - REAR SEAT | \$283 |
|---|--------------|

| | |
|---|--------------|
| FT*/FV* CREW CAB 2008 ONWARDS - REAR SEAT | \$283 |
|---|--------------|

Rough Country Canvas Seat Covers

| | |
|--|--------------|
| F-SERIES FH 2008 ONWARDS, FX-GIGA - DRIVER'S SEAT ONLY - TO SUIT ISRI 6860 SUSPENSION SEAT | \$198 |
|--|--------------|

| | |
|---|--------------|
| F-SERIES FH 2008 ONWARDS - INCLUDES DRIVER, CENTRE AND PASSENGER COVERS. WILL NOT SUIT PASSENGER SUSPENSION SEAT. | \$283 |
|---|--------------|

| | |
|---------------------------------------|--------------|
| NL* 2008 ONWARDS - DRIVER & PASSENGER | \$283 |
|---------------------------------------|--------------|

| | |
|--------------------------------------|--------------|
| NN*/NP*/NQ* 2008 ONWARDS - REAR SEAT | \$283 |
|--------------------------------------|--------------|

| | |
|---|--------------|
| NN*/NP*/NQ* 2008-2014 - DRIVER & PASSENGER - EXCLUDING SUSPENSION DRIVER'S SEAT | \$283 |
|---|--------------|

| | |
|---|--------------|
| NN*/NP*/NQ* 2015 ONWARDS - DRIVER & PASSENGER - WITH SUSPENSION DRIVER'S SEAT | \$283 |
|---|--------------|

| | |
|---|--------------|
| FS*/FR* CREW CAB 2008 ONWARDS - REAR SEAT | \$322 |
|---|--------------|

| | |
|---|--------------|
| FT*/FV* CREW CAB 2008 ONWARDS - REAR SEAT | \$322 |
|---|--------------|

| | |
|--|----------------|
| FULL SIZE LH - ALL N, F, FX* AND FY* MODELS 2008 - ONWARDS | \$80.60 |
|--|----------------|

| | |
|--|----------------|
| FULL SIZE RH - ALL N, F, FX* AND FY* MODELS 2008 - ONWARDS | \$80.60 |
|--|----------------|

| | |
|--|----------------|
| SLIMLINE - CX*/EX* MODELS 2008 - ONWARDS | \$82.20 |
|--|----------------|

| | |
|--|----------------|
| FULL SIZE LH - ALL CX* AND EX* MODELS 2008 - ONWARDS | \$94.65 |
|--|----------------|

| | |
|--|----------------|
| FULL SIZE RH - ALL CX* AND EX* MODELS 2008 - ONWARDS | \$98.05 |
|--|----------------|

| | |
|--|-----------------|
| SLIMLINE KIT (LH&RH) - ALL N, F, FX* AND FY* MODELS 2008 - ONWARDS | \$189.00 |
|--|-----------------|



Weathershields

Practical and stylish solution for open window driving.



Isuzu Lubricants

The use of Isuzu lubricants will provide the ongoing protection you and your truck or 4WD deserve. Speak to your local Isuzu dealer about the complete range of Isuzu Lubricants including engine oils, gear oils, coolant and grease to suit a wide range of applications.

| | | | |
|---------------------------------|-------------------|--|-------------------|
| NEXTGEN PLUS 10W40 - 5L | \$43.95 | TRANS 85W-140 - 5L | \$41.80 |
| NEXTGEN PLUS 10W40 - 20L | \$163.00 | TRANS 85W-140 - 20L | \$153.00 |
| NEXTGEN PLUS 10W40 - 205L | \$1,548.00 | TRANS 85W-140 - 1000L | \$6,653.00 |
| NEXTGEN PLUS 10W40 - 1000L | \$6,771.00 | FS TRANS 75W-80 - 5L | \$86.50 |
| DIESEL GOLD 15W-40 - 5L | \$38.65 | FS TRANS 75W-80 - 20L | \$344.00 |
| DIESEL GOLD 15W-40 - 20L | \$143.00 | TRANS 80W-90 - 5L | \$53.95 |
| DIESEL GOLD 15W-40 - 205L | \$1,348.00 | TRANS 80W-91 - 20L | \$207.00 |
| NEXTGEN LIGHT COMMERCIAL - 5L | \$56.15 | TRANS 80W-92 - 205L | \$2,008.00 |
| NEXTGEN LIGHT COMMERCIAL - 20L | \$202.00 | HYDRAULIC AW 68 - 20L | \$109.00 |
| NEXTGEN LIGHT COMMERCIAL - 205L | \$1,756.00 | HYDRAULIC AW 46 - 20L | \$109.00 |
| AMT FLUID - 5L | \$48.00 | GREASE MP2 - 450G | \$9.20 |
| GIGA AMT 90 - 20L | \$164.00 | GREASE MP2 - 20KG | \$257.00 |
| GIGA AMT 90 - 205L | \$1,351.00 | DOT 4 - 500ML | \$10.05 |
| TRANS 50 - 20L | \$159.00 | DOT 4 - 4L | \$56.40 |
| ATF III - 1L | \$12.30 | CAB TILT OIL - 1L | \$12.45 |
| ATF III - 5L | \$44.00 | DIESEL INJECTOR CLEANER - 350ML | \$13.90 |
| ATF III - 20L | \$137.00 | DIESEL INJECTOR CLEANER - 1L | \$30.35 |
| | | LIMITED SLIP DIFFERENTIAL ADDITIVE - 118ML | \$38.85 |

Shift Brake Cleaner Aerosol

400gm



ONLY \$6.90



Shift Brake Cleaner

Shift Brake Cleaner is a versatile solvent cleaner that effectively cleans oil, dirt, grease and dust from brake components.

20L **\$115.00**



Shift Tyre Shine

Shift Tyre Shine is formulated with silicone which rejuvenates tyres and provides a shiny finish.

20L **\$146.00**



Shift Truck Wash

Shift Truck Wash effectively removes road grime and dirt from a range of surfaces.

20L **79.30**
200L **713.00**

The Ultra Quiet Genset

| | | |
|--|--|--|
| Ultra Quiet Genset 20KVA GS020PTY \$23,496.53 | Ultra Quiet Genset 37KVA GS037PTY \$32,263.89 | Ultra Quiet Genset 50KVA GS050PTY \$40,154.51 |
|--|--|--|

Power Solutions

ISUZU SERVICE AGREEMENTS

Zero-stress servicing. Brought to you by Isuzu.

No business wants big, unexpected bills. But with an Isuzu service agreement, you can flatten your truck servicing costs into a predictable monthly payment (or upfront fee with Isuzu Essentials). You'll also be part of one of Australia's biggest dealer networks, so you can book a service at locations around the country. With the new Chain of Responsibility laws, proper servicing will protect your business. Lastly, service agreements come with Isuzu Care, Australia's most comprehensive truck customer care programme. To find out more, see your nearest dealer or visit isuzu.com.au/care-support/service-agreements.

Ask your local Isuzu dealer about which service agreement is right for you.

Isuzu Essentials

Isuzu Essentials Plus

Isuzu Total

Isuzu Heritage



Service

Isuzu Merchandise



Phone Wallet
\$5.55



Wireless Charger
\$10.60



Keyring
\$12.65



Bamboo Mug
\$20.00



Kangaroo Plush
\$22.15



Neoprene Backpack
\$30.00



Premium Leather Wallet
\$33.05



Hi-Vis Fleece Jumper
\$44.20



Hi-Vis Hoodie
\$46.20



Men's Corporate Belt
\$54.40



Short Sleeve Work Shirt
\$55.50



Mens Fleece Hoodie
\$56.40



Womens Fleece Hoodie
\$56.40



Steak Knife Set (6pc)
\$59.55



Neo Hoodie
\$68.85

Apparel available in various sizes. Contact your local dealer for more information.

Our Transport Industry Partners



VISIT [PARTS.ISUZU.COM.AU/FIND-A-DEALER](https://parts.isuzu.com.au/find-a-dealer) FOR YOUR CLOSEST DEALERSHIP

Prices published are recommended selling prices, include GST and are effective 1st April 2022 until 30th June 2022 or while stocks last. Images are for illustrative purposes only. All parts advertised herein have been included in good faith and on the basis that those parts will be available at participating Isuzu Dealerships at the time of publication. Isuzu and participating Dealers reserve the right to correct any errors made in parts listed and/or the pricing published.